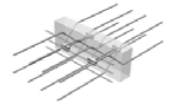
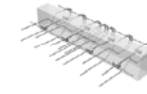
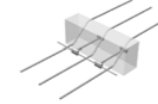
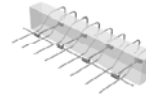
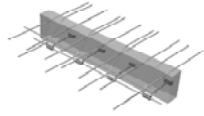


Typelist-přehled typů a vydaných návrhových tabulek k 07.06.2012



Description  
popis

Schnittkräfte  
vnitřní síly

Fugenbreite [mm]

šířka spáry [mm]

TYP

Beton

B-Deckung, bet. krytí

Name / Označ. prvku

for cantilevered balconies pro vetknuté balkóny							
01							
M, V (V±)							
80				120			
MM_				MXL_			
C20/25		C25/30		C20/25		C25/30	
c <sub>o</sub> =30mm	c <sub>o</sub> =35mm	c <sub>o</sub> =30mm	c <sub>o</sub> =35mm	c <sub>o</sub> =30mm	c <sub>o</sub> =35mm	c <sub>o</sub> =30mm	c <sub>o</sub> =35mm
MM10	MM10	MM10	MM10	MXL10	MXL10	MXL10	MXL10
MM10-VA	MM10-VA	MM10-VA	MM10-VA	MXL10-VA	MXL10-VA	MXL10-VA	MXL10-VA
MM20	MM20	MM20	MM20	MXL20	MXL20	MXL20	MXL20
MM20-VA	MM20-VA	MM20-VA	MM20-VA	MXL20-VA	MXL20-VA	MXL20-VA	MXL20-VA
MM30	MM30	MM30	MM30	MXL30	MXL30	MXL30	MXL30
MM30-VA	MM30-VA	MM30-VA	MM30-VA	MXL30-VA	MXL30-VA	MXL30-VA	MXL30-VA
MM30-VB	MM30-VB	MM30-VB	MM30-VB	MXL30-VB	MXL30-VB	MXL30-VB	MXL30-VB
MM30-V±	MM30-V±	MM30-V±	MM30-V±	MXL30-V±	MXL30-V±	MXL30-V±	MXL30-V±
MM40	MM40	MM40	MM40	MXL40	MXL40	MXL40	MXL40
MM40-VA	MM40-VA	MM40-VA	MM40-VA	MXL40-VA	MXL40-VA	MXL40-VA	MXL40-VA
MM40-VB	MM40-VB	MM40-VB	MM40-VB	MXL40-VB	MXL40-VB	MXL40-VB	MXL40-VB
MM40-V±	MM40-V±	MM40-V±	MM40-V±	MXL40-V±	MXL40-V±	MXL40-V±	MXL40-V±
MM50	MM50	MM50	MM50	MXL50	MXL50	MXL50	MXL50
MM50-VA	MM50-VA	MM50-VA	MM50-VA	MXL50-VA	MXL50-VA	MXL50-VA	MXL50-VA
MM50-VB	MM50-VB	MM50-VB	MM50-VB	MXL50-VB	MXL50-VB	MXL50-VB	MXL50-VB
MM50-V±	MM50-V±	MM50-V±	MM50-V±	MXL50-V±	MXL50-V±	MXL50-V±	MXL50-V±
MM60	MM60	MM60	MM60	MXL60	MXL60	MXL60	MXL60
MM60-VA	MM60-VA	MM60-VA	MM60-VA	MXL60-VA	MXL60-VA	MXL60-VA	MXL60-VA
MM60-VB	MM60-VB	MM60-VB	MM60-VB	MXL60-VB	MXL60-VB	MXL60-VB	MXL60-VB
MM60-V±	MM60-V±	MM60-V±	MM60-V±	MXL60-V±	MXL60-V±	MXL60-V±	MXL60-V±
MM70	MM70	MM70	MM70	MXL70	MXL70	MXL70	MXL70
MM70-VA	MM70-VA	MM70-VA	MM70-VA	MXL70-VA	MXL70-VA	MXL70-VA	MXL70-VA
MM70-VB	MM70-VB	MM70-VB	MM70-VB	MXL70-VB	MXL70-VB	MXL70-VB	MXL70-VB
MM70-V±	MM70-V±	MM70-V±	MM70-V±	MXL70-V±	MXL70-V±	MXL70-V±	MXL70-V±
MM80	MM80	MM80	MM80	MXL80	MXL80	MXL80	MXL80
MM80-VA	MM80-VA	MM80-VA	MM80-VA	MXL80-VA	MXL80-VA	MXL80-VA	MXL80-VA
MM80-VB	MM80-VB	MM80-VB	MM80-VB	MXL80-VB	MXL80-VB	MXL80-VB	MXL80-VB
MM80-V±	MM80-V±	MM80-V±	MM80-V±	MXL80-V±	MXL80-V±	MXL80-V±	MXL80-V±
MM90	MM90	MM90	MM90	MXL90	MXL90	MXL90	MXL90
MM90-VA	MM90-VA	MM90-VA	MM90-VA	MXL90-VA	MXL90-VA	MXL90-VA	MXL90-VA
MM90-VB	MM90-VB	MM90-VB	MM90-VB	MXL90-VB	MXL90-VB	MXL90-VB	MXL90-VB
MM90-V±	MM90-V±	MM90-V±	MM90-V±	MXL90-V±	MXL90-V±	MXL90-V±	MXL90-V±
MM100	MM100	MM100	MM100	MXL100	MXL100	MXL100	MXL100
MM100-VA	MM100-VA	MM100-VA	MM100-VA	MXL100-VA	MXL100-VA	MXL100-VA	MXL100-VA
MM100-VB	MM100-VB	MM100-VB	MM100-VB	MXL100-VB	MXL100-VB	MXL100-VB	MXL100-VB
MM100-V±	MM100-V±	MM100-V±	MM100-V±	MXL100-V±	MXL100-V±	MXL100-V±	MXL100-V±
a	b	c	d	e	f	g	h

Notizen:

MM\_ \_ \_ (blaue Fettschrift) .... Dazu gibt Elementzeichnungen

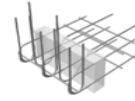
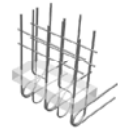
for corner balconies pro rohové balkóny			
02			
M, V			
80			
MM_-Eck			
C20/25		C25/30	
c <sub>o</sub> =30/50mm	c <sub>o</sub> =35/55mm	c <sub>o</sub> =30/50mm	c <sub>o</sub> =35/55mm
MM20-Eck	MM20-Eck	MM20-Eck	MM20-Eck
MM30-Eck	MM30-Eck	MM30-Eck	MM30-Eck
MM50-Eck	MM50-Eck	MM50-Eck	MM50-Eck
a	b	c	d

for supported balconies pro podepřené balkóny (smykové prvky ±)	
03	
V	
80	120
VM_	VXL_
C20/25+C25/30	C20/25+C25/30
c <sub>o</sub> = 30 mm	c <sub>o</sub> = 30 mm
VM10	VXL10
VM20	VXL20
VM30	VXL30
VM35	VXL35
VM40	VXL40
VM50	VXL50
VM70	VXL70
VM80	VXL80
VM90	VXL90
VM100	VXL100
VM110	VXL110
a	b

(shorter elements) (smykové krátké prvky)	
04	
V	
80	120
VM_-K	VXL_-K
C20/25+C25/30	C20/25+C25/30
c <sub>o</sub> = 30 mm	c <sub>o</sub> = 30 mm
VM5-K	VXL5-K
VM10-K	VXL10-K
VM15-K	VXL15-K
VM20-K	VXL20-K
VM25-K	VXL25-K
VM30-K	VXL30-K
VM35-K	VXL35-K
VM40-K	VXL40-K
VM45-K	VXL45-K
VM50-K	VXL50-K
VM60-K	VXL60-K
VM70-K	VXL70-K
VM80-K	VXL80-K
VM90-K	VXL90-K
VM100-K	VXL100-K
a	b

for supported balconies ± pro podepřené balkóny ± (smykové ±)	
05	
V±	
80	120
VM_±	VXL_±
C20/25+C25/30	C20/25+C25/30
c <sub>o</sub> = 30 mm	c <sub>o</sub> = 30 mm
VM10±	VXL10±
VM20±	VXL20±
VM30±	VXL30±
VM35±	VXL35±
VM40±	VXL40±
VM50±	VXL50±
a	b

(shorter elements ±) (smykové krátké prvky ±)	
06	
V±	
80	120
VM_-K±	VXL_-K±
C20/25+C25/30	C20/25+C25/30
c <sub>o</sub> = 30 mm	c <sub>o</sub> = 30 mm
VM5-K±	VXL5-K±
VM10-K±	VXL10-K±
VM15-K±	VXL15-K±
VM20-K±	VXL20-K±
VM25-K±	VXL25-K±
VM30-K±	VXL30-K±
VM35-K±	VXL35-K±
VM40-K±	VXL40-K±
VM45-K±	VXL45-K±
VM50-K±	VXL50-K±
VM60-K±	VXL60-K±
VM70-K±	VXL70-K±
VM80-K±	VXL80-K±
VM90-K±	VXL90-K±
VM100-K±	VXL100-K±
a	b



for loggia balconies pro lodžiové balkóny (spojité nosníky, ±)							
07							
M±, V±							
80				120			
MM_±				MXL_±			
C20/25		C25/30		C20/25		C25/30	
c <sub>o</sub> =c <sub>i</sub> =30	c <sub>o</sub> =35, c <sub>i</sub> =30	c <sub>o</sub> =c <sub>i</sub> =30	c <sub>o</sub> =35, c <sub>i</sub> =30	c <sub>o</sub> =c <sub>i</sub> =30	c <sub>o</sub> =35, c <sub>i</sub> =30	c <sub>o</sub> =c <sub>i</sub> =30	c <sub>o</sub> =35, c <sub>i</sub> =30
MM30±	MM30±	MM30±	MM30±	MXL30±	MXL30±	MXL30±	MXL30±
MM30±-VA	MM30±-VA	MM30±-VA	MM30±-VA	MXL30±-VA	MXL30±-VA	MXL30±-VA	MXL30±-VA
MM30±-VB	MM30±-VB	MM30±-VB	MM30±-VB	MXL30±-VB	MXL30±-VB	MXL30±-VB	MXL30±-VB
MM50±	MM50±	MM50±	MM50±	MXL50±	MXL50±	MXL50±	MXL50±
MM50±-VA	MM50±-VA	MM50±-VA	MM50±-VA	MXL50±-VA	MXL50±-VA	MXL50±-VA	MXL50±-VA
MM50±-VB	MM50±-VB	MM50±-VB	MM50±-VB	MXL50±-VB	MXL50±-VB	MXL50±-VB	MXL50±-VB
MM70±	MM70±	MM70±	MM70±	MXL70±	MXL70±	MXL70±	MXL70±
MM70±-VA	MM70±-VA	MM70±-VA	MM70±-VA	MXL70±-VA	MXL70±-VA	MXL70±-VA	MXL70±-VA
MM70±-VB	MM70±-VB	MM70±-VB	MM70±-VB	MXL70±-VB	MXL70±-VB	MXL70±-VB	MXL70±-VB
MM90±	MM90±	MM90±	MM90±	MXL90±	MXL90±	MXL90±	MXL90±
MM90±-VA	MM90±-VA	MM90±-VA	MM90±-VA	MXL90±-VA	MXL90±-VA	MXL90±-VA	MXL90±-VA
MM90±-VB	MM90±-VB	MM90±-VB	MM90±-VB	MXL90±-VB	MXL90±-VB	MXL90±-VB	MXL90±-VB
a	b	c	d	e	f	g	h

for roof parapets pro atiky, parapety
08
M±, V±, N
60
MS-A_
C20/25
c = 30
MS-A10*

for cantilevered brackets pro vetknuté římsy (krátké konzoly)
09
M±, V, H±
60
MS-O_
C20/25
c = 30
MS-O10*

for upstands pro předsunuté atiky
10
M±, V, N±
60
MS-F_
C20/25
c = 30
MS-F10*

for cantilevered beams pro vetknuté nosníky
11
M, V
80
MM-S_
C20/25
c = 50
MM-S10*
MM-S20*
MM-S30*
MM-S40*

for cantilevered walls pro vetknuté stěny
12
M, V <sub>vert</sub> , V <sub>horiz</sub> ±
80
MM-W_
C20/25
c = 50
MM-W10*
MM-W20*
MM-W30*
MM-W40*

Schnittkräfte  
vnitřní síly  
Fugenbreite [mm]  
šířka spáry [mm]  
TYP  
Beton  
B-Deckung, bet.krytí  
Name / Označ. prvků

for additional forces pro další vnitřní síly	
13	
H <sub>ij</sub> , H,	
80	
MM-VH/NH/VNH..	
120	
MXL-VH/NH/VNH..	
C20/25	
MM-VH-h...	
MM-NH-h...	
MM-VNH-h...	
a	
b	

M <sub>y</sub> , H <sub>ij</sub> , Z	
80	
MM-VNH-E..	
C20/25	
c <sub>o</sub> =c <sub>i</sub> =30	
c <sub>o</sub> =35, c <sub>i</sub> =30	
MM-VNH-E10	
MM-VNH-E20	
c	
d	

\*Names may be without MS or MM  
\*Jména mohou být bez MS nebo MM